

# Vido

## Trusted 24/7 Surveillance System

Vido is the most reliable and cost-effective camera for 24/7 surveillance and intelligent thermography. Vido is available in different array formats. Inside RedLook Surveillance functionality, SENSIA provides some of the most effective applications in terms of safety and security including people, vehicle and object detection, tracking and counting while enforcing customizable prohibited area protocols.



Intelligent  
Thermography



Surveillance



Automatic  
Reporting



RedLook Camera  
AI Analytics



Integration  
Rest API, Cloud Services, IoT



ATEX Zone I  
Housing Available



Instant &  
Accurate Alarms



## REDLOOK

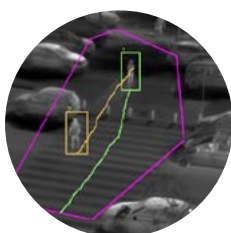
Vido is a part of our AI-powered RedLook solution for exhaustive continuous monitoring and real-time alerting. RedLook is highly versatile, allowing operators to configure several Regions of Interest (RoI) within the area to be autonomously monitored. RedLook can assign a functionality to each configured RoI, granting a complete and safe surveillance of the installation.

## Technology Data Sheet



### Forbidden area surveillance

Simply set up an ROI then continuously monitor forbidden areas for intruders



### People and vehicle tracking and counting

AI-powered people and vehicle tracking and counting to monitor activity in key areas



### Hot spot saturation

Simultaneously monitor operating temperatures of components



### Temperature indicator

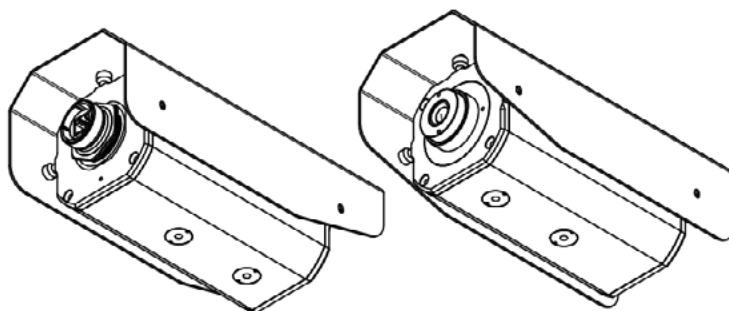
Shows the precise temperature value of elements shown in the center of the screen.

## Specifications

FPA	640 x 480 px   384 x 288 px
Pixel Pitch	12 $\mu$ m
NETD	<50mK @ +30°C
Lenses	7,5 mm   14 mm   20 mm   25 mm   35 mm   50 mm
Zoom	Digital Zoom
Accuracy	$\pm$ 2°C or 2% WIG (from 0°C to 120°C)
Data Protocol	GigE 9 Hz / 25 Hz
Power	<3 watts; PoE (power over ethernet) 9v-48
Weight	3kg
Size	97 x 110 x 330 mm
Operating Temp. Range	-20°C to +50°C
Storage Temp. Range	-40°C to +71°C
Certifications	IP66 (EN 60529) EMC (EN 61326:2013) II 3G Ex ec IIC T4 Gc EN 60079-0:2012 + A11:2013; EN 60079-7:2015
<b>Features Under Demand</b>	
Optional Lenses	From 5 mm to 150 mm
Auxiliar Power Supply	12 VDC (instead of PoE)
Optional Lenses	From 5 mm to 150 mm
Auxiliar Power Supply	12 VDC (instead of PoE)
Pan & Tilt	Contact us for further details
SMART Model	
ATEX Housing Options	

**Specifications are subject to change.**

For the most up-to-date specifications, please email us: [contact@sensia-solutions.com](mailto:contact@sensia-solutions.com)



### HEADQUARTERS

SENSIA Solutions S.L.  
Calle Margarita Salas,12  
28919 Leganés, Madrid

+34 91 055 92 90

[www.sensia-solutions.com](http://www.sensia-solutions.com)

[contact@sensia-solutions.com](mailto:contact@sensia-solutions.com)

### QUALITY POLICIES

