

Rai

Dependable 24/7 Flame Detection System

Rai is SENSIA's latest camera specialized in simultaneous fire detection, surveillance, and intelligent thermography. Inside the RedLook Flame Detection functionality, SENSIA provides the most effective applications in boosting safety and security with visual confirmation and no false alarms.



Flame
Detection



Intelligent
Thermography



Surveillance



Automatic
Reporting



RedLook Camera
AI Analytics



Integration
Rest API, Cloud Services, IoT



ATEX Zone I
Housing Available



Instant &
Accurate Alarms



REDLOOK

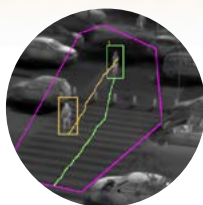
Rai is a part of our AI-powered RedLook solution for exhaustive continuous monitoring and real-time alerting. RedLook is highly versatile, allowing operators to configure several Regions of Interest (RoI) within the area to be autonomously monitored. RedLook can assign a functionality to each configured RoI, granting a complete and safe surveillance of the installation.

Technology Data Sheet



Intelligent flame detection

: AI-powered algorithms detect and alert operators in the case of a fire



Forbidden area and intruder tracking

Simply set up an ROI then continuously monitor forbidden areas and count/track intruders



Hot spot saturation

Simultaneously monitor operating temperatures of components

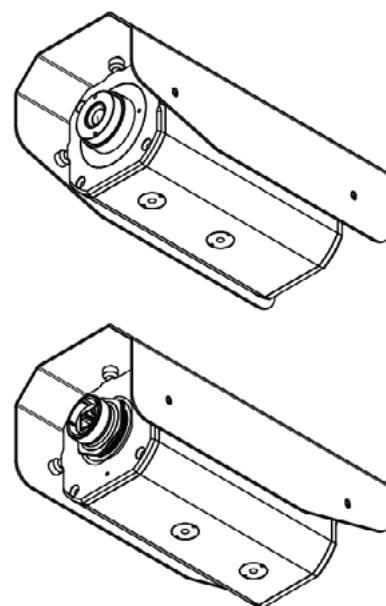


Temperature indicator

Shows the precise temperature value of elements shown in the center of the screen.

Specifications

FPA	640 x 480 px 384 x 288 px
Pixel Pitch	12 μ m
NETD	<50mK @ +30°C
Lenses	7,5 mm 14 mm 20 mm 25 mm 35 mm 50 mm
Zoom	Digital Zoom
Accuracy	$\pm 2^{\circ}\text{C}$ or 2% WIG (from 0°C to 120°C)
Data Protocol	GigE 9 Hz / 25 Hz
Power	24VDC @6A
Weight	3.2kg
Size	97 x 110 x 330 mm
Operating Temp. Range	-10°C to +50°C
Storage Temp. Range	-40°C to +71°C
Certifications	IP66 (EN 60529) EMC (EN 61326:2013) II 3G Ex ec IIC T4 Gc -20°C \leq Tamb \leq +50°C



Features Under Demand

Optional Lenses	From 5 mm to 150 mm
Auxiliar Power Supply	12 VDC (instead of PoE)
Pan & Tilt	Contact us for further details
SMART Model	
ATEX Housing Options	

Specifications are subject to change.

For the most up-to-date specifications, please email us: contact@sensia-solutions.com

HEADQUARTERS

SENSIA Solutions S.L.
Calle Margarita Salas,12
28919 Leganés, Madrid

+34 91 055 92 90

www.sensia-solutions.com

contact@sensia-solutions.com

QUALITY POLICIES

