

Methane Laser+ **OGI**

Powerful OGI + Methane Laser Monitoring System

Our Methane Laser + OGI is the first combined system based on an infrared camera and a laser for methane detection and quantification in both ppm-m of methane and flow rate of other gases. Integrated with the latest laser and QOGI technology, it is the most complete system for constant monitoring of environments with risks of CH₄



Gas
Detection



Gas
Quantification



Surveillance



Intelligent
Thermography



Flame
Detection



RedLook Camera
AI Analytics



Integration
Rest API, Cloud Services, IoT



ATEX Zone I
Housing Available



Instant &
Accurate Alarms



Automatic
Reporting



REDLOOK

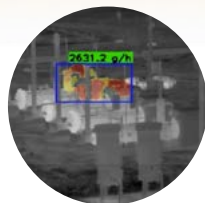
RedLook enables exhaustive monitoring and real-time alerting. It is highly versatile, allowing to configure several Regions of Interest (RoI) within the area to be monitored. RedLook can assign a functionality to each configured RoI, granting a total and safe surveillance of the installation.

Technology Data Sheet



Instant gas visualization

Simply set up a ROI then instantaneously detect, visualize and quantify gas leaks.



AI-powered flow rate quantification

Accurate gas flow rate quantification based on our established neural networks and scenario based training



Hot spot saturation

Simultaneously monitor operating temperatures of components



Temperature indicator

Shows the precise temperature value of elements shown in the center of the screen.

Specifications

	Caroline FYL	Caroline FXYL	Mileva 33 FL
FPA	Uncooled 640 x 480 px		Cooled 640 x 512 px
Pixel Pitch	17 μm		15 μm
NETD	<22mK @ +30°C		<15mK @ +50°C
Spectral Region	7 to 9,5 μm	7 to 14 μm	3,2 to 3,4 μm
Lenses	20 mm 35 mm 50 mm		
Zoom	Digital Zoom		
Temperature Meas. Accuracy	$\pm 1^\circ\text{C}$ (fr m 0°C to 250°C Scene Temp.)		
Data Protocol	GigE 9 Hz / 60 Hz		
Power	<3 watts; PoE (power over ethernet) 9v-48v		12 watts
Weight	42 kg		
Size	423 x 428 x 315 mm		
Operating Temp. Range	-20°C to +50°C		-10°C to +50°C
Storage Temp. Range	-40°C to +71°C		

Methane Laser Specifications

Range	100 m
Measurement Performance	<50000 ppm·m : Accuracy $\pm 10\%$
Resolution	1 ppm
Certification	II 2G Ex d IIC T6 Gb

Pan & Tilt Specifications

Mounting	4 x $\varnothing 11\text{mm}$ on 195 PCD
Backlash	<0,1°
Max. Preset Accuracy	0,5°
Power	230 - 120 VAC, 75 W

Specifications are subject to change.

For the most up-to-date specifications, please email us: contact@sensia-solutions.com

HEADQUARTERS

SENSIA Solutions S.L.
Calle Margarita Salas,12
28919 Leganés, Madrid

+34 91 055 92 90

www.sensia-solutions.com

contact@sensia-solutions.com

QUALITY POLICIES

